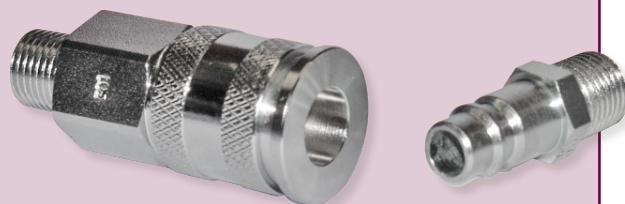


ACCESSORIES

AIRLINE COUPLINGS

AIRLINE COUPLINGS



500 Series shown

RYCO AIRLINE COUPLINGS – FEATURES

RUGGED – LONG LASTING

All **RYCO AIRLINE** Couplings have stainless steel springs and balls, synthetic rubber seals, and brass or hardened steel sleeves. Australian designed, for Australian conditions.

SUPER-HI-FLOW

Efficient “Super-Hi-Flow” design produces maximum airflow, with minimum pressure drop. This means more air-power at your tool... where you need it.

ONE TOUCH OPERATION

Retract the sleeve on **290** and **500** Series – “one touch” – and the nipple ejects from the coupling.

The sleeve remains in the release position. To reconnect, **290**, **500** and **500R** Series simply push together with their nipples – “one touch” – to seal and lock – no need to retract the sleeve again. The sleeve snaps forward to confirm positive connection.

SELF SEALING – 360° SWIVEL

Couplings can be coupled and uncoupled up to 17,2 bar/250 psi line pressure. The valve in the coupling automatically seals when your tool is disconnected. Nipple is unvalved. 360° swivel feature allows free movement when unpressurised to avoid hose kinking or twisting.

THREAD LOCKED

Our Automatic Couplings are thread-locked on assembly to eradicate damage from high frequency vibration. **300** Series feature Crimp Ring construction.

THE RYCO AIRPOWER RANGE – SPECIFICATIONS

Recommended for: General industrial pneumatic use with air compressors, air hoses, blow guns, air driven hand tools, air supply to spray painting equipment, tyre inflating equipment, etc.

Only **RYCO 500R** Series Couplings are recommended for Respiratory Breathing Air. **RYCO 500R** and all other RYCO Series are **NOT RECOMMENDED** for Underwater Diving applications.

SPECIFICATIONS		200 SERIES BRASS	200S SERIES STEEL	290 SERIES SUPER HI-FLOW	300 SERIES INDUSTRIAL	400 SERIES SUPER HI-FLOW	500 SERIES SUPER HI-FLOW	500R SERIES BREATHING AIR
FLOW CAPACITY @ 7 bar/100 psi	CFM	60	60	90	165	90	100	100
	LPM	1700	1700	2500	4700	2500	2800	2800
MAX. WORKING PRESSURE	bar	15	20	35	35	15	35	35
	psi	220	290	500	500	220	500	500
TEMPERATURE RANGE	°C	-20° to +80°	-20° to +80°	-20° to +80°	-20° to +80°	-20° to +80°	-20° to +80°	-20° to +80°
	°F	-4° to +176°	-4° to +176°	-4° to +176°	-4° to +176°	-4° to +176°	-4° to +176°	-4° to +176°

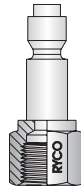
MATERIAL							
BODY	BRASS	STEEL	STEEL	STEEL	STEEL	STEEL	BRASS
SLEEVE	BRASS	HARDENED STEEL	HARDENED STEEL	HARDENED STEEL	HARDENED STEEL	HARDENED STEEL	BRASS
SEALS	NITRILE	NITRILE	NITRILE	NITRILE	NITRILE	NITRILE	NITRILE
BALLS	STAINLESS STEEL	STAINLESS STEEL	STAINLESS STEEL	STAINLESS STEEL	STAINLESS STEEL	STAINLESS STEEL	STAINLESS STEEL
SPRING	STAINLESS STEEL	STAINLESS STEEL	STAINLESS STEEL	STAINLESS STEEL	STAINLESS STEEL	STAINLESS STEEL	STAINLESS STEEL
NIPPLE	BRASS	HARDENED STEEL	HARDENED STEEL	HARDENED STEEL	HARDENED STEEL	HARDENED STEEL	HARDENED STEEL
PLATING	UNPLATED	RYCOTE CrVI free (SILVER)	RYCOTE CrVI free (SILVER)	RYCOTE CrVI free (SILVER)	RYCOTE CrVI free (SILVER)	RYCOTE CrVI free (SILVER) CHROME PLATED (COUPLING) RYCOTE CrVI free (NIPPLE)	UNPLATED (COUPLING) RYCOTE CrVI free (NIPPLE)

ACCESSORIES

200, 200S & 290 SERIES AIRLINE COUPLINGS

200, 200S & 290 AIRLINE COUPLINGS	BSPP FEMALE	BSPT MALE	HOSE BARB
----------------------------------------------	--------------------	------------------	------------------

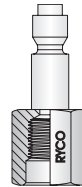
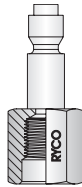
COUPLING NIPPLE



SUITED SERIES						THREAD BSPT	BRASS	STEEL	BRASS	STEEL	BRASS	STEEL
200	200S	290	300	400	500		PART NO	PART NO	PART NO	PART NO	PART NO	PART NO
✓	✓	✓				1/8	255			204		
✓	✓	✓				3/16					256	
✓	✓	✓				1/4	203	203S	202	202S	205	205S
✓	✓	✓				5/16					206	206S
✓	✓	✓				3/8		266S		251S	206A	206AS
✓	✓	✓				1/2		270S		252S		254S

SCHRADER	217	217A
-----------------	------------	-------------

COUPLING NIPPLE



SUITED SERIES						SCHRADER SHORT BRASS	SCHRADER LONG BRASS
200	200S	290	300	400	500	PART NO	PART NO
✓	✓	✓				217	217A