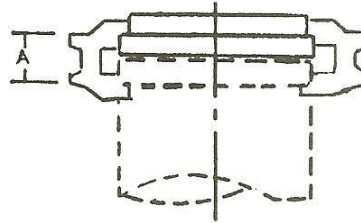


BLANK ENDS

NPS mm	O.D. mm	"A" mm	Weight (kilos)
50*	60	26	0.6
80	89	26	0.9
100*	114	26	1.4
150*	165	26	2.4
200*	219	30.5	5.9

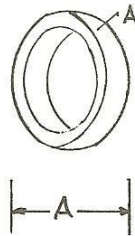


*AVAILABLE AS CAST FITTINGS

ALL MEASUREMENTS AND WEIGHTS ARE APPROXIMATE

WELD-ON RINGS

NPS mm	O.D. mm	"A" mm	Weight (kilos)
50	60	16	0.2
80	89	16	0.3
100	114	17.5	0.4
150	165	17.5	0.5
200	219	20.5	0.7
250	265	20.5	0.9



NPS mm	O.D. mm	"A" mm	Weight Kilos
300	314	20.5	1.0
350	356	24.0	1.2
400	406	25.5	1.6
450	457	25.5	2.0
500	508	25.5	1.8
550	558	25.5	2.3
600	609	25.5	2.5

ALL MEASUREMENTS AND WEIGHTS ARE APPROXIMATE