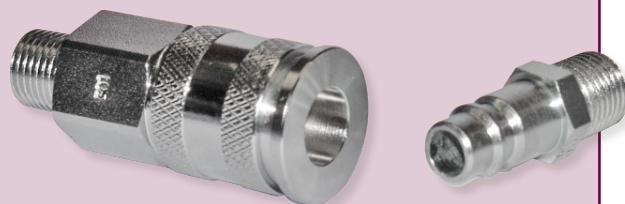


# ACCESSORIES

## AIRLINE COUPLINGS

# AIRLINE COUPLINGS



500 Series shown

### RYCO AIRLINE COUPLINGS – FEATURES

#### RUGGED – LONG LASTING

All **RYCO AIRLINE** Couplings have stainless steel springs and balls, synthetic rubber seals, and brass or hardened steel sleeves. Australian designed, for Australian conditions.

#### SUPER-HI-FLOW

Efficient “Super-Hi-Flow” design produces maximum airflow, with minimum pressure drop. This means more air-power at your tool... where you need it.

#### ONE TOUCH OPERATION

Retract the sleeve on **290** and **500** Series – “one touch” – and the nipple ejects from the coupling.

The sleeve remains in the release position. To reconnect, **290**, **500** and **500R** Series simply push together with their nipples – “one touch” – to seal and lock – no need to retract the sleeve again. The sleeve snaps forward to confirm positive connection.

#### SELF SEALING – 360° SWIVEL

Couplings can be coupled and uncoupled up to 17,2 bar/250 psi line pressure. The valve in the coupling automatically seals when your tool is disconnected. Nipple is unvalved. 360° swivel feature allows free movement when unpressurised to avoid hose kinking or twisting.

#### THREAD LOCKED

Our Automatic Couplings are thread-locked on assembly to eradicate damage from high frequency vibration. **300** Series feature Crimp Ring construction.

### THE RYCO AIRPOWER RANGE – SPECIFICATIONS

**Recommended for:** General industrial pneumatic use with air compressors, air hoses, blow guns, air driven hand tools, air supply to spray painting equipment, tyre inflating equipment, etc.

Only **RYCO 500R** Series Couplings are recommended for Respiratory Breathing Air. **RYCO 500R** and all other RYCO Series are **NOT RECOMMENDED** for Underwater Diving applications.

SPECIFICATIONS		200 SERIES BRASS	200S SERIES STEEL	290 SERIES SUPER HI-FLOW	300 SERIES INDUSTRIAL	400 SERIES SUPER HI-FLOW	500 SERIES SUPER HI-FLOW	500R SERIES BREATHING AIR
<b>FLOW CAPACITY @ 7 bar/100 psi</b>	<b>CFM</b>	60	60	90	165	90	100	100
	<b>LPM</b>	1700	1700	2500	4700	2500	2800	2800
<b>MAX. WORKING PRESSURE</b>	<b>bar</b>	15	20	35	35	15	35	35
	<b>psi</b>	220	290	500	500	220	500	500
<b>TEMPERATURE RANGE</b>	<b>°C</b>	-20° to +80°	-20° to +80°	-20° to +80°	-20° to +80°	-20° to +80°	-20° to +80°	-20° to +80°
	<b>°F</b>	-4° to +176°	-4° to +176°	-4° to +176°	-4° to +176°	-4° to +176°	-4° to +176°	-4° to +176°

#### MATERIAL

	200 SERIES BRASS	200S SERIES STEEL	290 SERIES SUPER HI-FLOW	300 SERIES INDUSTRIAL	400 SERIES SUPER HI-FLOW	500 SERIES SUPER HI-FLOW	500R SERIES BREATHING AIR
<b>BODY</b>	BRASS	STEEL	STEEL	STEEL	STEEL	STEEL	BRASS
<b>SLEEVE</b>	BRASS	HARDENED STEEL	HARDENED STEEL	HARDENED STEEL	HARDENED STEEL	HARDENED STEEL	BRASS
<b>SEALS</b>	NITRILE	NITRILE	NITRILE	NITRILE	NITRILE	NITRILE	NITRILE
<b>BALLS</b>	STAINLESS STEEL	STAINLESS STEEL	STAINLESS STEEL	STAINLESS STEEL	STAINLESS STEEL	STAINLESS STEEL	STAINLESS STEEL
<b>SPRING</b>	STAINLESS STEEL	STAINLESS STEEL	STAINLESS STEEL	STAINLESS STEEL	STAINLESS STEEL	STAINLESS STEEL	STAINLESS STEEL
<b>NIPPLE</b>	BRASS	HARDENED STEEL	HARDENED STEEL	HARDENED STEEL	HARDENED STEEL	HARDENED STEEL	HARDENED STEEL
<b>PLATING</b>	UNPLATED	RYCOTE CrVI free (SILVER)	RYCOTE CrVI free (SILVER)	RYCOTE CrVI free (SILVER)	RYCOTE CrVI free (SILVER)	CHROME PLATED (COUPLING) RYCOTE CrVI free (NIPPLE)	UNPLATED (COUPLING) RYCOTE CrVI free (NIPPLE)

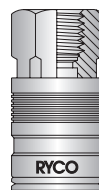
## AIRLINE COUPLINGS

BSPT MALE

BSPT FEMALE

HOSE BARB

AUTOMATIC COUPLINGS



THREAD/ BARB	PER CARD	AIRLINE COUPLINGS BSPT MALE			AIRLINE COUPLINGS BSPT FEMALE			AIRLINE COUPLINGS HOSE BARB		
inch		200 SERIES	290 SERIES	400 SERIES	200 SERIES	290 SERIES	400 SERIES	200 SERIES	290 SERIES	400 SERIES
1/4	1	P201	P291	P420SM	P200	P290	P420SF*		P296	P420SH
5/16	1								P297A	P425SH
3/8	1		P293	P430SM		P292	P430SF*		P298	P430SH

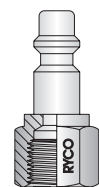
NOTE: \*Thread is BSPT Female

## COUPLING NIPPLES

BSPT MALE

BSPP FEMALE

HOSE BARB



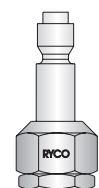
THREAD/ BARB	PER CARD	COUPLING NIPPLE BSPT MALE			COUPLING NIPPLE BSPP FEMALE			COUPLING NIPPLE HOSE BARB		
inch		200 SERIES	290 SERIES	400 SERIES	200 SERIES	290 SERIES	400 SERIES	200 SERIES	290 SERIES	400 SERIES
1/4	2	P202	P202S	P420PM	P203	P203S	P420PF*	P205	P205S	P420PH
5/16	2							P206	P206S	P425PH
3/8	2		P251S	P430PM		P266S	P430PF*	P206A	P206AS	P430PH

NOTE: \*Thread is BSPT Female

## AIR CHUCK

P214

P216



THREAD	PER CARD	AIR CHUCK BSPP FEMALE	AIR CHUCK COUPLING NIPPLE	
inch		PART NO	200 SERIES	290 SERIES
1/4" FEMALE	1	P214	P216	P216

INTRODUCTION

HOSE

COUPLINGS

ADAPTORS

ACCESSORIES

FILTERS

TECHNICAL