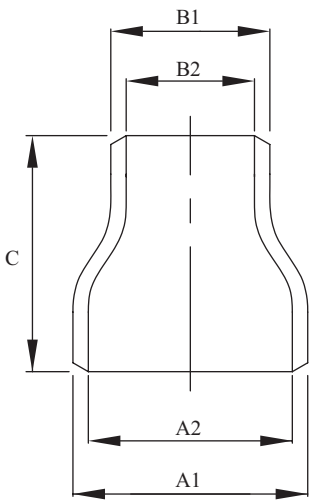
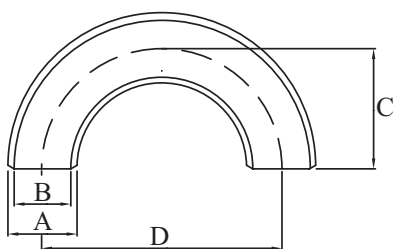


Buttweld Concentric Reducer (Std) continued



Buttweld STD ASTM A234 WPB ANSI B16.9 Concentric Reducer								
AAP CODE	IMPERIAL SIZE	LARGER DIAMETER		SMALLER DIAMETER		END TO END	WALL THICKNESS	APPROX. KG/PC
		A1	A2	B1	B2	C		
WCR9680	6 x 3	168.3	154.1	88.9	77.9	139.7	7.1	3.6
WCR9694	6 x 4	168.3	154.1	114.3	102.3	139.7	7.1	3.5
WCR9695	6 x 5	168.3	154.1	141.3	128.1	139.7	7.1	3.7
WCR9894	8 x 4	219.1	202.7	114.3	102.3	152.4	8.2	6.3
WCR9895	8 x 5	219.1	202.7	141.3	128.1	152.4	8.2	5.9
WCR9896	8 x 6	219.1	202.7	168.3	154.1	152.4	8.2	5.9
WCRX2596	10 x 6	273.1	254.5	168.3	154.1	177.8	9.3	10.0
WCRX2598	10 x 8	273.1	254.5	219.1	202.7	177.8	9.3	10.3
WCRX3096	12 x 6	323.9	304.9	168.3	154.1	203.2	9.5	15.2
WCRX3098	12 x 8	323.9	304.9	219.1	202.7	203.2	9.5	15.3
WCRX30X25	12 x 10	323.9	304.9	273.1	254.5	203.2	9.5	15.4
WCRX35X25	14 x 10	355.6	336.5	273.1	254.5	330	9.5	28.0
WCRX35X30	14 x 12	355.6	336.5	323.9	304.9	330	9.5	28.0
WCRX40X25	16 x 10	406.4	387.3	273.1	254.5	356	9.5	35.0
WCRX40X30	16 x 12	406.4	387.3	323.9	304.9	356	9.5	35.0
WCRX40X35	16 x 14	406.4	387.3	355.6	336.5	356	9.5	35.0
WCRX45X30	18 x 12	457	437.9	323.9	304.8	381	9.5	40.0
WCRX45X35	18 x 14	457	437.9	355.6	336.5	381	9.5	40.0
WCRX45X40	18 x 16	457	437.9	406.4	387.3	381	9.5	40.0
WCRX50X30	20 x 12	508	488.9	323.9	304.8	508	9.5	61.0
WCRX50X35	20 x 14	508	488.9	355.6	336.5	508	9.5	61.0
WCRX50X40	20 x 16	508	488.9	406.4	387.3	508	9.5	61.0
WCRX60X45	24 x 18	610	590.9	457.0	437.9	508	9.5	77.0
WCRX60X50	24 x 20	610	590.9	508.0	488.9	508	9.5	77.0

Buttweld Long Radius Elbow 180 Degree (Std)



Buttweld STD ASTM A234 WPB ANSI B16.9 Long Radius Elbow 180 Degree							
AAP CODE	IMPERIAL SIZE	A	B	C	D	WALL THICKNESS	APPROX. KG/PC
WE20U	3/4	26.7	20.9	28.4	76.2	2.9	0.16
WE25U	1	33.4	26.6	38.1	76.2	3.4	0.3
WE32U	1 1/4	42.2	35.0	47.8	95.6	3.6	0.32
WE40U	1 1/2	48.3	40.9	57.2	114.4	3.7	0.8
WE50U	2	60.3	52.5	76.2	152.4	3.9	1.4
WE65U	2 1/2	73.0	62.6	95.2	190.4	5.2	2.6
WE80U	3	88.9	77.9	114.3	228.6	5.5	4.0
WE94U	4	114.3	102.3	152.4	304.8	6.1	7.6