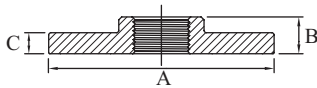
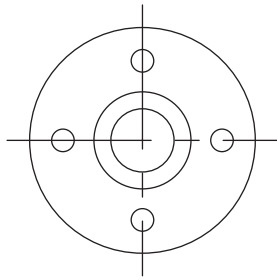
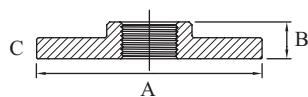
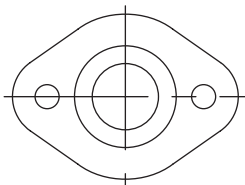


Galvanised Malleable Flange BS10 Drilled Table "D"



Galvanised Malleable Flange BS10 Drilled Table "D"					
AAP CODE	IMPERIAL SIZE	A	B	C	APPROX KG/PC
LFD15	1/2	88.9	12.7	7.2	0.29
LFD20	3/4	88.9	15.9	7.9	0.33
LFD25	1	101.6	17.5	8.7	0.46
LFD32	1-1/4	101.6	19.1	8.7	0.45
LFD40	1-1/2	114.3	22.2	9.5	0.62
LFD50	2	139.7	25.4	10.3	0.96
LFD65	2-1/2	165.0	30.0	10.3	1.28
LFD80	3	185.0	33.8	10.3	1.75
LFD94	4	215.0	39.0	11.2	2.63
LFD96	6	280.0	41.7	13.8	4.72

Galvanised Malleable Flange Oval



Galvanised Malleable Flange Oval					
AAP CODE	IMPERIAL SIZE	A	B	C	APPROX KG/PC
LFO15	1/2	80	17	55.0	0.18
LFO20	3/4	90	19	66.0	0.27
LFO25	1	100	21.8	75.0	0.38
LFO32	1-1/4	120	22	90.0	0.59
LFO40	1-1/2	132	24	100.0	0.72
LFO50	2	140	24	110.0	0.77