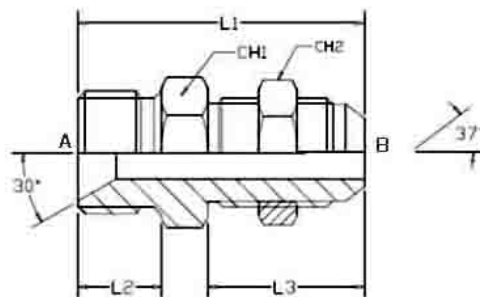


STRAIGHT ADAPTORS
B-GK

MALE BSPP X JIC BULKHEAD
 BSPP MALE WITH 60° CONE X JIC MALE WITH 37° CONE
 WITH NUT



Part Number	BSPP Male Thread (A)	JIC Male Thread (B)	Overall Length mm (L1)	Thread Length - mm (L2)	Thread Length - mm (L3)	Hex A/F (CH1)	Hex A/F (CH2)
B-GK-0609	3/8-19	9/16-18	48.2	13.5	28.5	22	22
B-GK-0812	1/2-14	3/4-16	53.8	14.5	37	25.4	23.7
B-GK-0814	1/2-14	7/8-14	66.2	14.5	41	29	29