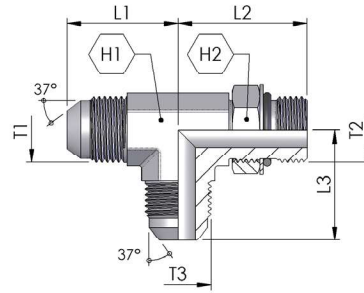


TEE ADAPTORS

**G-NP-G**

JIC MALE X UNO ADJUSTABLE X JIC MALE  
JIC MALE X UNO ADJUSTABLE STUD X JIC MALE RUN TEE  
• ISO 8434-2

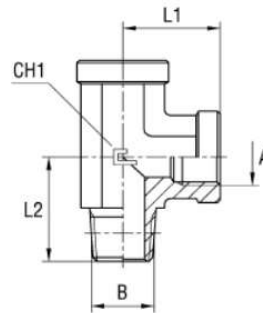


Part Number	T1/T3	T2	L1 (mm)	L2 (mm)	L3 (mm)	H1 (mm)	H2 (mm)	PN (bar)
G-NP-G-070707	7/16-20	7/16-12	22.6	26.2	22.6	11	14	315
G-NP-G-090909	9/16-18	9/16-18	26.9	31.7	26.9	14	18	250
G-NP-G-121212	3/4-16	3/4-16	31.7	36.9	31.7	19	22	250
G-NP-G-141414	7/8-14	7/8-14	36.9	43.2	36.9	22	25	200
G-NP-G-171717	1.1/16-12	1.1/16-12	42.2	45.2	42.2	27	32	200
G-NP-G-212121	1.5/16-12	1.5/16-12	46.0	52.0	46.0	33.3	38.1	160
G-NP-G-262626	1.5/8-12	1.5/8-12	52.3	57.2	52.3	41.3	47.6	125

TEE ADAPTORS

**L-AC-AC**

NPTF MALE X NPTF FEMALE X NPTF FEMALE  
NPTF MALE X NPTF FEMALE X NPTF FEMALE RUN TEE



Part Number	NPTF Male Thread (A)	NPTF Female Thread (B)	L1 (mm)	L2 (mm)	L3 (mm)	Hex A/F - CH1 (mm)	PN (bar)
L-AC-AC-020202	1/8-27	1/8-27	19.8	16.8	16.8	14.3	345
L-AC-AC-040404	1/4-18	1/4-18	27.7	22.4	22.4	19.1	275
L-AC-AC-060606	3/8-18	3/8-18	31	25.9	25.9	22.2	210
L-AC-AC-080808	1/2-14	1/2-14	37.3	31.2	31.2	27	210
L-AC-AC-121212	3/4-14	3/4-14	40.4	35.1	35.1	33.3	170
L-AC-AC-161616	1-11.1/2	1-11.1/2	50	41.1	41.1	41.3	140
L-AC-AC-202020	1.1/4-11.1/2	1.1/4-11.1/2	60.5	43.2	43.2	47.6	80

† - Please contact Hydraulink for further details and availability.  
Pricing current as at 6 Dec 2020 and excludes GST. Hydraulink reserve the right to change pricing and technical specifications without notice.