



## **Band Clamping Systems**

**Universal Hose and Pipe Clamps  
Made in Germany**



**Bandimex Befestigungssysteme GmbH** was founded in 1982 and has developed into an internationally active company. Our products have opened a wide range of applications and are used worldwide in many different branches of industry.



With our fastening technologies, we provide universal and economical solutions in numerous applications, such as hose clamping, sign fastening etc.

The careful choice of materials, their processing on the most modern machines and critical test procedures guarantee the high quality standards of our products.

A well assorted stock of raw materials and finished products as well as a highly motivated team of qualified staff form the basis for the quick and reliable supplying of our customers.



Using the **Bandimex Tool**, a roll of **Bandimex Band** and **Bandimex Buckles**, a clamp fitting each diameter and each shape can easily and quickly be applied at low cost, to clamp all types of hoses, fix signs and boards to poles, pipe mounting, and many other fastening applications.



## Bandimex Tool

Tensioning capability over 1,0 t

Cat.No.		kg
W 001	Bandimex Tool	2,00

## Replacement Parts

Cat.No.		kg
W 043	Close Quarter Tension Nut	0,06
W 006	Handle and Tension Screw	0,57
W 012	Cutter Bar	0,05
W 016	Ball Bearing	0,03

All replacement parts for the **Bandimex Tool W 001** are separately available.



## Bandimex Band full round edge, SS-CrNi 30 m/roll

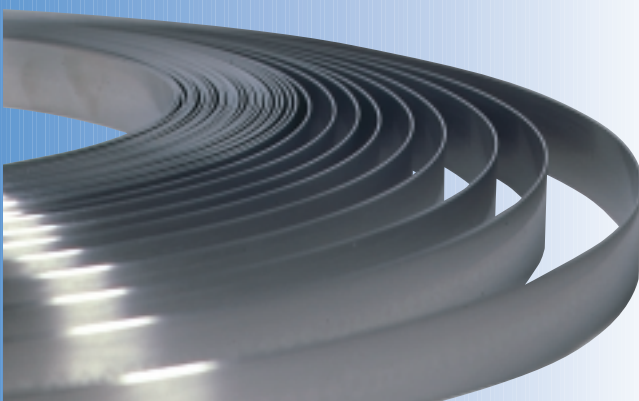
Cat.No.	width	thickness	kg
B 202	6,4 mm - 1/4"	0,50 mm - .020"	0,8
B 203	9,5 mm - 3/8"	0,64 mm - .025"	1,5
B 204	12,7 mm - 1/2"	0,75 mm - .030"	2,3
B 205	16,0 mm - 5/8"	0,75 mm - .030"	2,9
B 206	19,0 mm - 3/4"	0,75 mm - .030"	3,4

On request also available in mill coil lengths.

## Bandimex Band full round edge, SS-CrNiMo 30 m/roll

Cat.No.	width	thickness	kg
B 402	6,4 mm - 1/4"	0,50 mm - .020"	0,8
B 403	9,5 mm - 3/8"	0,64 mm - .025"	1,5
B 404	12,7 mm - 1/2"	0,75 mm - .030"	2,3
B 405	16,0 mm - 5/8"	0,75 mm - .030"	2,9
B 406	19,0 mm - 3/4"	0,75 mm - .030"	3,4

On request also available in mill coil lengths.



**Bandimex Buckles**  
for single or double wrapped  
Bandimex Band, SS-CrNi

100 pcs./box

Cat.No.	for band width	kg
S 252	6,4 mm – 1/4"	0,1
S 253	9,5 mm – 3/8"	0,4
S 254	12,7 mm – 1/2"	1,0
S 255	16,0 mm – 5/8"	1,1
S 256	19,0 mm – 3/4"	1,7

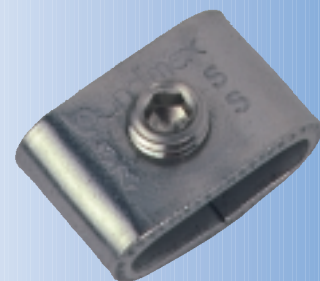
**Bandimex Buckles**  
for single or double wrapped  
Bandimex Band, SS-CrNiMo

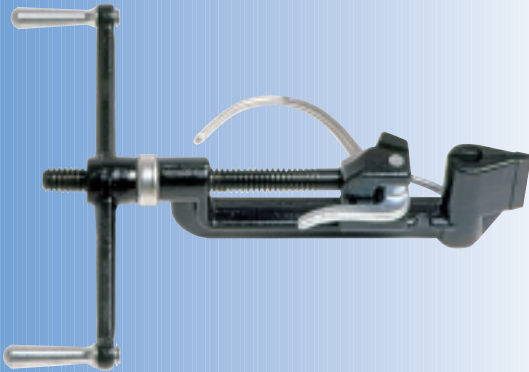
100 pcs./box

Cat.No.	for band width	kg
S 452	6,4 mm – 1/4"	0,1
S 453	9,5 mm – 3/8"	0,4
S 454	12,7 mm – 1/2"	1,0
S 455	16,0 mm – 5/8"	1,1
S 456	19,0 mm – 3/4"	1,7

**Bandimex Scru-Buckles**  
for retensioning clamps, SS-CrNi

Cat.No.	for band width	pcs./box	kg
S 722	9,5 mm – 3/8"	50	0,2
S 724	12,7 mm – 1/2"	25	0,2
S 726	19,0 mm – 3/4"	25	0,4



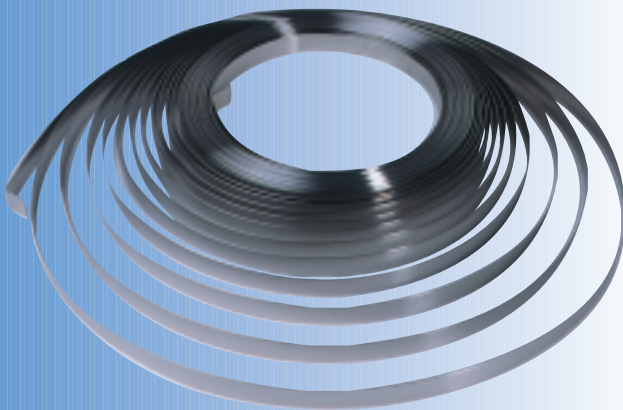


## Bandimex JUMBO-Tool

Tensioning capability over 2,5 t

The Bandimex JUMBO-Tool is used to apply Bandimex JUMBO-Band and Bandimex JUMBO-Buckles.

Cat.No.		kg
W 402	Bandimex JUMBO-Tool	5,0



## Bandimex JUMBO-Band for heavy-duty clamping applications, full round edge, SS-CrNi

30 m/roll

Cat.No.	width	thickness	kg
B 430	19,0 mm - 3/4"	1,2 mm - .047"	5,5
B 431	25,0 mm - 1"	1,0 mm - .040"	6,0
B 432	32,0 mm - 1 1/4"	1,0 mm - .040"	7,7

On request also available in mill coil lengths.



## Bandimex JUMBO-Buckles for single or double wrapped Bandimex JUMBO-Band, SS-CrNi

25 pcs./box

Cat.No.	for band width	kg
S 440	19,0 mm - 3/4"	0,8
S 441	25,0 mm - 1"	1,1
S 442	32,0 mm - 1 1/4"	1,4

**Bandimex L-Band**  
**for light-duty clamping applications,**  
**full round edge, SS-CrNi**  
**thickness: 0,4 mm - .016"**

**30 m/roll**

Cat.No.	width	kg
B 133	9,5 mm - $\frac{3}{8}$ "	0,9
B 134	12,7 mm - $\frac{1}{2}$ "	1,2
B 135	16,0 mm - $\frac{5}{8}$ "	1,5
B 136	19,0 mm - $\frac{3}{4}$ "	1,8

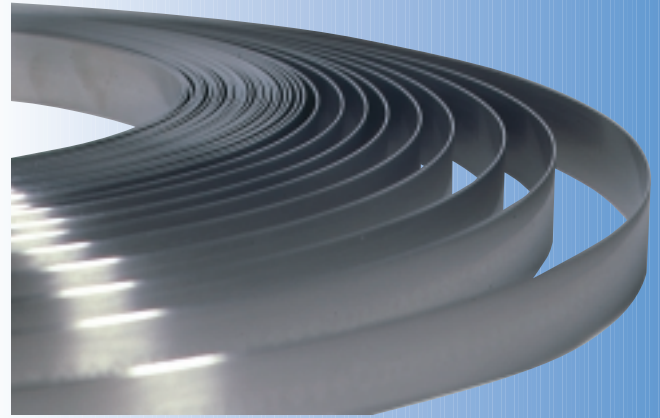
**50 m/roll**

Cat.No.	width	kg
B 127	9,5 mm - $\frac{3}{8}$ "	1,5
B 128	12,7 mm - $\frac{1}{2}$ "	2,0
B 129	16,0 mm - $\frac{5}{8}$ "	2,5
B 130	19,0 mm - $\frac{3}{4}$ "	3,0

**90 m/roll**

Cat.No.	width	kg
B 123	9,5 mm - $\frac{3}{8}$ "	2,7
B 124	12,7 mm - $\frac{1}{2}$ "	3,7
B 125	16,0 mm - $\frac{5}{8}$ "	4,6
B 126	19,0 mm - $\frac{3}{4}$ "	5,5

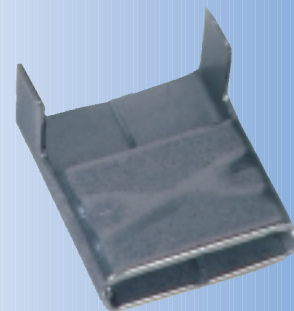
On request also available in mill coil lengths.



**Bandimex L – Clips**  
**for use with Bandimex L-Band and**  
**Bandimex L-Band Plus, SS-CrNi**  
**100 pcs./box**

Cat.No.	for band width	kg
S 153	9,5 mm - $\frac{3}{8}$ "	0,3
S 154	12,7 mm - $\frac{1}{2}$ "	0,4
S 155	16,0 mm - $\frac{5}{8}$ "	0,5
S 156	19,0 mm - $\frac{3}{4}$ "	0,9
S 176 *	19,0 mm - $\frac{3}{4}$ "	1,1

\* reinforced for extra strength



**Bandimex L-Band Plus**  
**full round edge, SS-CrNi**  
**thickness: 0,5 mm - .020"**  
**30 m/roll**

Cat.No.	width	kg
B 181	12,7 mm - 1/2"	1,5
B 161	19,0 mm - 3/4"	2,3

**50 m/roll**

Cat.No.	width	kg
B 183	12,7 mm - 1/2"	2,5
B 163	19,0 mm - 3/4"	3,9

On request also available in mill coil lengths.

On request **Bandimex L-Band**, **Bandimex L-Band Plus** and **Bandimex L-Clips** are also available in other material grades.

### Plastic Dispenser

**Bandimex Band**, **Bandimex L-Band** and **Bandimex L-Band Plus** are also available in waterproof plastic packaging with carrying handle.

### Bandimex Pre-assembled Clamps

Available in **SS-CrNi** and **SS-CrNiMo**.

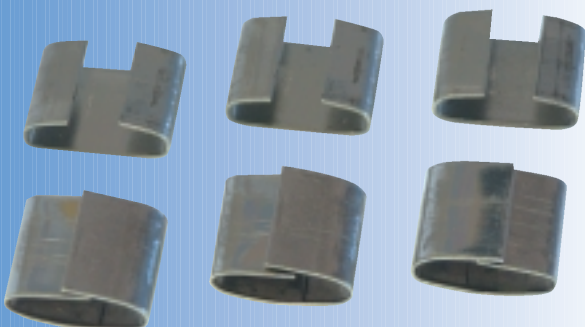
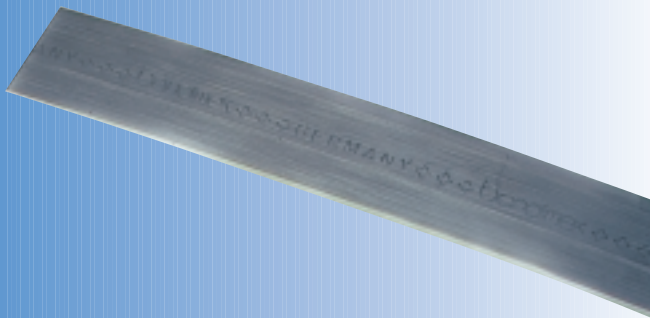
On request we supply bands of any required length, with or without **Bandimex Buckles**, **Bandimex Scru-Buckles** or **Bandimex L-Clips** securely mounted on the band.

### Bandimex Seals

Available in **SS-CrNi** and **SS-CrNiMo**.

U-form and overlapping.

For band width 3/8", 1/2", 5/8" and 3/4".





Pull buckle on band, ears pointing towards end of band. Form clamp, holding band on band, then push buckle back over the doubled band, bending the end approx. 1" under buckle.



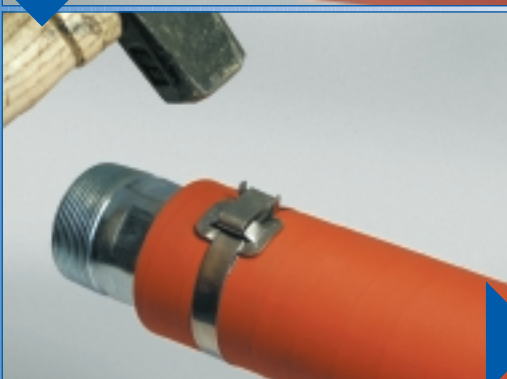
For heavy duty jobs double wrap band.



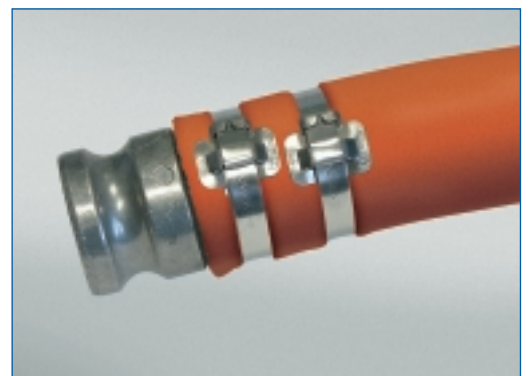
Place band in tool, push down on gripper with thumb, tension clamp by turning handle. Maximum tension is reached when band stops moving through buckle. When required tension has been applied, roll tool over buckle, at the same time reversing handle carefully approx. 1/2 turn to avoid breakage. There is no loss of tension, if handle is not reversed too much.



Pull on cutter lever, band is cut off to correct length.



Hold stub of band with thumb, hammer it flat over bridge of buckle, complete clamp by hammering ears over stub.





## NORMAFIX® – Retaining Products

### **NB-G**

Material: W1, W3  
for worm-drive  
band



### Buckle type **NB-G**

for worm-drive 13 mm band. Suitable for applications in tight conditions.  
Reusable.

Required tools: Screwdriver or hexagonal wrench SW 7 and tin snips.

### **NB-H**

Material: W1  
for band width  
16, 19 mm



### Buckle type **NB-H**

is an adjustable quick-release buckle and enables quick and simple assembly and disassembly.  
Reusable.

Required tools: Screwdriver and tin snips.

## Applications

- Retaining, sealing and repairing pipes
- Retaining signs and containers
- Sealing hoses

## The advantages at a glance

- Flexible, multi-purpose system
- Ease of assembly even in narrow spaces