

Ultra-Matic® 2" Clamped Metallic Pumps

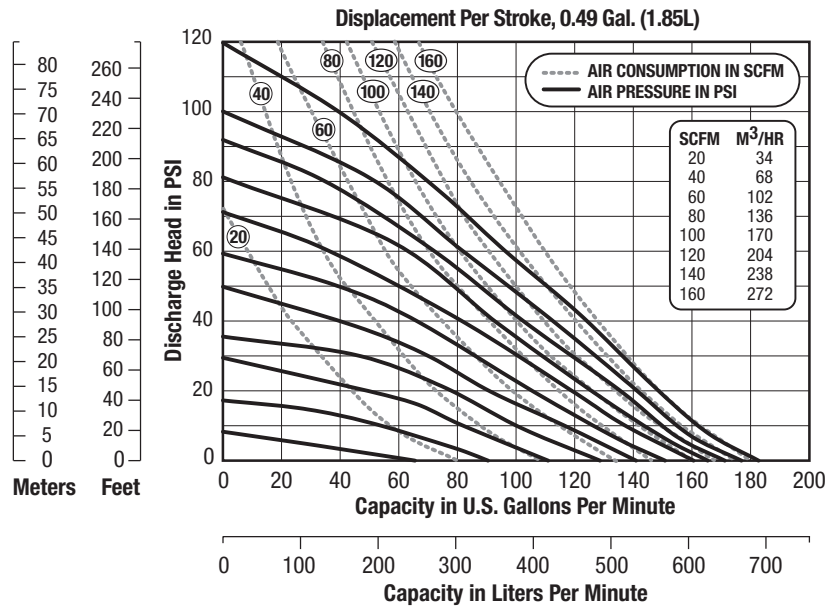
U2

Specifications

	English	Metric
Flow rate		
adjustable to	0-182 gpm	0-689 lpm
Port size		
Inlet and Outlet	2" Female NPT (BSP)	
Air inlet	0.50" Female NPT	
Air exhaust	0.75" Female NPT	
Suction lift* (dry)		
Rubber	20'	6.10 m
PTFE	10'	3.05 m
Max. particle size		
Diameter	0.25"	6 mm
Shipping weight		
Aluminum	69 lbs	31 kg
Cast Iron	114 lbs	52 kg
Hastelloy	124 lbs	56 kg
Stainless Steel	114 lbs	52 kg



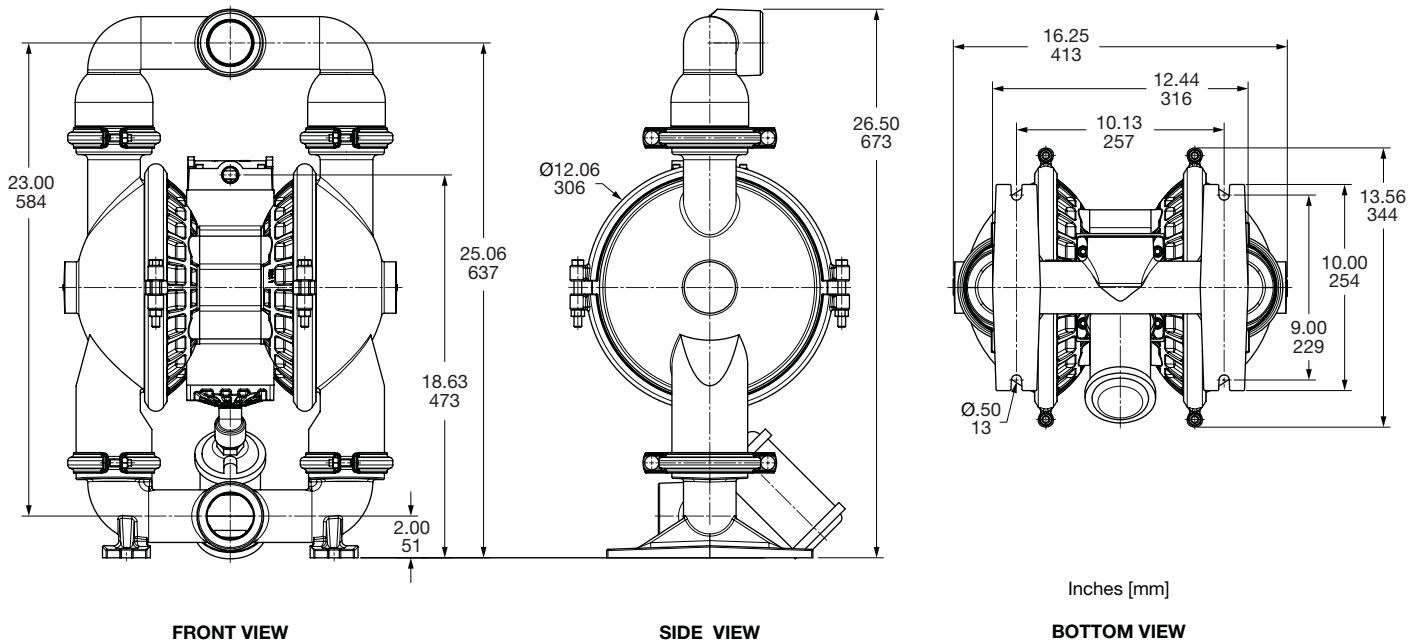
Performance



NOTE: For U2 pumps fitted with PTFE diaphragms, reduce water discharge figures by 20%. Suction lift is reduced to 10' (3.05m) dry and 20' (6.10m) wet.

CAUTION: Do not exceed 125 psig (8.5 bars) air supply or liquid pressure.

Dimensions



Consult factory for certified drawings.