

Heavy Duty Welded SERIES CASTORS

UP TO
400KG

MOUNTING
PLATES
AVAILABLE

HEAVY DUTY WELDED

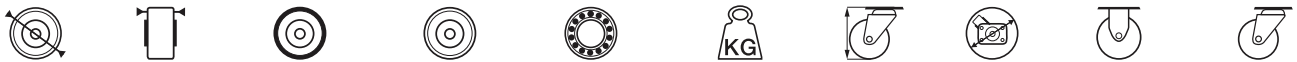
Precision built for durability under extreme working conditions, the Heavy Duty Welded Series is ideal for the exhaustive demands of industrial environments when a low profile high load bearing castor is required.

Featuring a precision machined swivel ball race providing an unrivalled ultra smooth swivel action and a kingpin made of high tensile steel made to withstand high side impact loads.

Finished in an attractive zinc plating to provide corrosion resistance, Richmond can also supply the heavy duty welded series in stainless steel for use in very corrosive environments.



S547



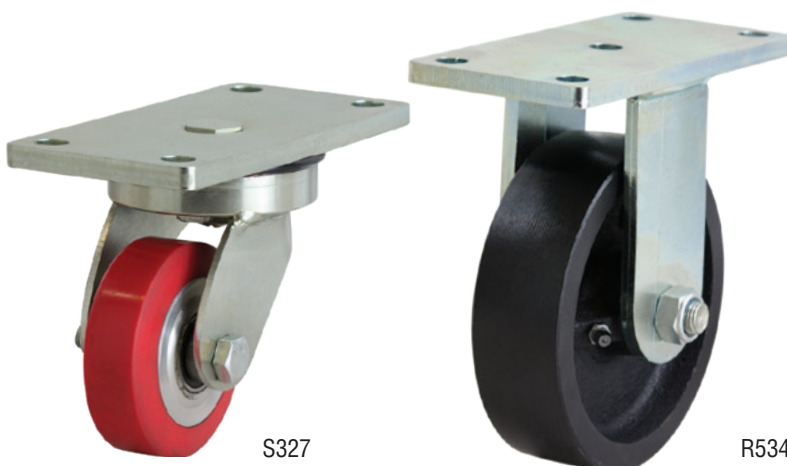
| Diameter (mm) | Width (mm) | Wheel Type | Wheel Code | Bearing Type | Load Capacity | Height (mm) | Swivel Radius | Rigid Code | Swivel Code |
|---------------|------------|------------|------------|--------------|---------------|-------------|---------------|------------|-------------|
| 75 | 25 | Poly Ci | PU350 | Ball | 240/180 | 114 | 76 | R328 | S327 |
| 75 | 30 | Nylon | NY3321 | Plain | 125/100 | 114 | 76 | R321 | S323 |
| 100 | 38 | Poly Ci | PU449 | Ball | 330/250 | 132 | 90 | R448 | S447 |
| 100 | 35 | Nylon | NY401 | SS Sleeve | 300/200 | 132 | 90 | R402 | S406 |
| 100 | 35 | Nylon | NY413 | Ball | 300/200 | 132 | 90 | R415 | S416 |
| 100 | 35 | Cast Iron | CI421 | Plain | 300/225 | 132 | 90 | R423 | S422 |
| 100 | 38 | Cast Iron | CI400 | Ball | 400/300 | 132 | 90 | R440 | S470 |
| 100 | 36 | Cast Iron | VG459 | Ball | 280 | 132 | 90 | R466 | S465 |
| 125 | 35 | Poly Ci | PU549 | Ball | 330/250 | 159 | 102 | R548 | S547 |
| 125 | 35 | Nylon | NY501 | SS Sleeve | 330/250 | 159 | 102 | R502 | S506 |
| 125 | 35 | Nylon | NY513 | Ball | 330/250 | 159 | 102 | R515 | S516 |
| 125 | 38 | Cast Iron | CI532 | Plain | 380/280 | 159 | 102 | R534 | S533 |

BRAKE OPTIONS: B = Brake D = 4 Way Directional Lock

To order castors with Brake or 4 Way Directional Lock or Swivel Lock & Brake add B or D to end of swivel code e.g. S442B

indicates castors suitable for high/low temperature applications.

Baseplate dimensions & drilling patterns for Heavy Duty Welded castors



S327

R534

