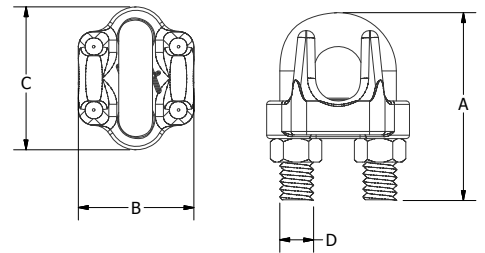


BEAVER STAINLESS STEEL FITTINGS (CONT'D)

BEAVER G316 STAINLESS STEEL WIRE ROPE GRIPS

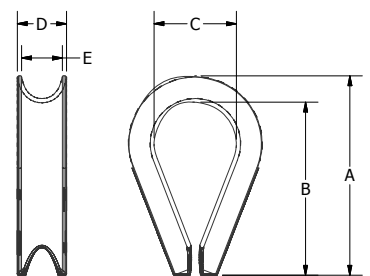
Code	Grade	Size mm	A mm	B mm	C mm	D mm	Weight Kg	UOM	Pack Qty
612202	316	2	18	13	15.3	M3	0.01	Each	800
612203	316	3	24.5	14.5	15.8	M4	0.015	Each	800
612204	316	4	24	18	18.5	M4	0.02	Each	500
612205	316	5	29	19.6	23	M5	0.022	Each	300
612206	316	6	31	20.5	26.3	M6	0.03	Each	200
612208	316	8	41	27	33.5	M8	0.08	Each	100
612210	316	10	52	33.8	42.7	M10	0.15	Each	50
612212	316	12	61	37.8	50	M12	0.23	Each	30
612214	316	14	67.5	42	50.6	M12	0.28	Each	25
612216	316	16	76	47	60	M14	0.41	Each	20



NOT TO BE USED FOR LIFTING

BEAVER G316 STAINLESS STEEL WIRE ROPE THIMBLES

Code	Grade	Size mm	A mm	B mm	C mm	D mm	E mm	Weight Kg	UOM	Pack Qty
612302	316	2	20.6	18	7.5	4.5	3	0.005	Each	1000
612303	316	3	24.3	21	10	6	4.3	0.007	Each	800
612304	316	4	27.8	24.8	11	6.6	5.2	0.008	Each	500
612305	316	5	30.5	26	13	8.5	6.8	0.009	Each	400
612306	316	6	37	32.6	15.5	10	8.8	0.01	Each	250
612308	316	8	51.5	45.5	23	12.5	10	0.02	Each	130
612310	316	10	56.4	50	27	14.6	12	0.03	Each	50
612312	316	12	68	61	32.5	18	14.5	0.05	Each	30
612316	316	16	82.7	75	37.5	22	19	0.09	Each	25



NOT TO BE USED FOR LIFTING