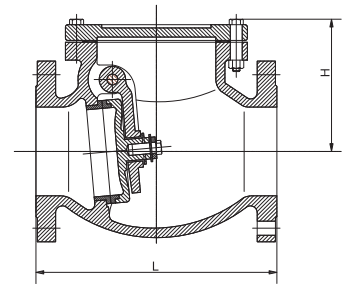


Resilient Seat Flanged Swing Check Valve (Table E)

Material List	
PART	MATERIAL
Body	Cast Iron
Cover	Cast Iron
Side Plug	Brass
Hanger Pin	Stainless Steel
Hanger	Ductile Iron
Disc	Cast Iron
Disc Trim	EPDM
Body Trim	Bronze
Gasket	Graphite

Specifications	
Flange	AS2129 T/E
Cold Working Pressure	1600kPa
MAX Working Temperature	120°C

Applications - Water Treatment Plants, can be fitted with counter lever and weight



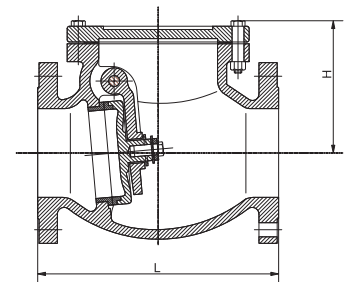
Resilient Seat Flanged Swing Check Valve Table E						
AAP CODE	IMPERIAL SIZE	L	H	HOLE DIAMETER	NO. HOLES	APPROX. KG/PC
VRSSC50	2	203	121	18	4	14
VRSSC65	2 1/2	216	135	18	4	14
VRSSC80	3	241	141	18	4	22
VRSSC94	4	292	168	18	8	35
VRSSC95	5	330	182	18	8	40
VRSSC96	6	356	215	22	8	61.5
VRSSC98	8	495	267	22	8	85
VRSSCX25	10	622	305	22	12	140
VRSSCX30	12	699	343	26	12	200

Resilient Seat Flanged Swing Check Valve (Table D)

Material List	
PART	MATERIAL
Body	Cast Iron
Cover	Cast Iron
Side Plug	Brass
Hanger Pin	Stainless Steel
Hanger	Ductile Iron
Disc	Cast Iron
Disc Trim	EPDM
Body Trim	Bronze
Gasket	Graphite

Specifications	
Flange	AS2129 T/D
Cold Working Pressure	1600kPa
MAX Working Temperature	120°C

Applications - Water Treatment Plants, can be fitted with counter lever and weight



Resilient Seat Flanged Swing Check Valve Table D						
AAP CODE	IMPERIAL SIZE	L	H	HOLE DIAMETER	NO. HOLES	APPROX. KG/PC
VRSSC94D	4	292	168	18	4	35
VRSSCX25D	10	622	305	22	8	140