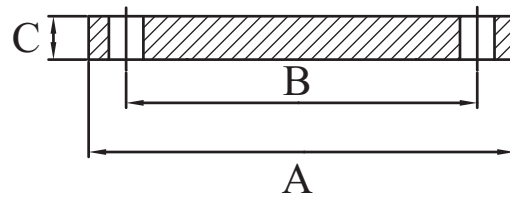


Stainless Steel 316/316L 'Table D' Blind Flanges

| Stainless Steel Table 'D' Blind Flanges 316/316L | | | | | | | | |
|--|---------------|-----|-----|------|-----------|---------------|-----------|--------------|
| AAP CODE | IMPERIAL SIZE | A | B | C | BOLT SIZE | HOLE DIAMETER | NO. HOLES | APPROX KG/PC |
| SSFBD31694 | 4 | 215 | 178 | 10.6 | M16 | 18 | 4 | 3.0 |
| SSFBD31696 | 6 | 279 | 235 | 13 | M16 | 18 | 8 | 6.49 |
| SSFBD31698 | 8 | 337 | 292 | 13 | M16 | 18 | 8 | 9.28 |
| SSFBD316X25 | 10 | 406 | 356 | 16 | M20 | 22 | 8 | 16.14 |



Stainless Steel 316/316L 'Table E' Slip On Flanges

| Stainless Steel Table 'E' Slip On 316/316L | | | | | | | | |
|--|---------------|-----|-----|------|-----------|---------------|-----------|--------------|
| AAP CODE | IMPERIAL SIZE | A | B | C | BOLT SIZE | HOLE DIAMETER | NO. HOLES | APPROX KG/PC |
| SSFSE31625 | 1 | 115 | 83 | 10.6 | M12 | 14 | 4 | 0.5 |
| SSFSE31632 | 1 1/4 | 120 | 87 | 10.6 | M12 | 14 | 4 | 0.6 |
| SSFSE31640 | 1 1/2 | 135 | 98 | 10.6 | M12 | 14 | 4 | 0.9 |
| SSFSE31650 | 2 | 150 | 114 | 10.6 | M16 | 18 | 4 | 1.1 |
| SSFSE31665 | 2 1/2 | 165 | 127 | 10.6 | M16 | 18 | 4 | 1.3 |
| SSFSE31680 | 3 | 185 | 146 | 11.6 | M16 | 18 | 4 | 1.8 |
| SSFSE31694 | 4 | 215 | 178 | 14.0 | M16 | 18 | 8 | 2.6 |
| SSFSE31696 | 6 | 280 | 235 | 17.5 | M20 | 22 | 8 | 4.9 |
| SSFSE31698 | 8 | 335 | 292 | 20.0 | M20 | 22 | 8 | 7.5 |

