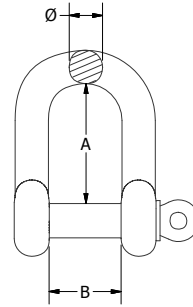


## BEAVER STAINLESS STEEL FITTINGS

### BEAVER G316 STAINLESS STEEL STANDARD DEE SHACKLES

Code	Grade	Shape	Closing Method	Dia Ø mm	A mm	B mm	Weight Kg	UOM	Pack Qty
615404	316	Dee	Screw	4	15	8.3	0.007	Each	1000
615405	316	Dee	Screw	5	17	11.3	0.013	Each	500
615406	316	Dee	Screw	6	22	12.3	0.021	Each	400
615408	316	Dee	Screw	8	28.6	17	0.052	Each	120
615410	316	Dee	Screw	10	35	20	0.11	Each	70
615412	316	Dee	Screw	12	45.5	25	0.19	Each	40
615416	316	Dee	Screw	16	56	32	0.37	Each	15
615419	316	Dee	Screw	19	67	38.5	0.72	Each	10

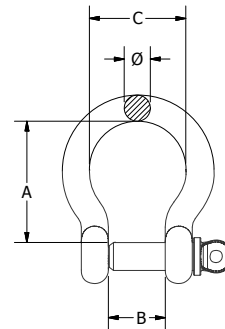
**NOT TO BE USED FOR LIFTING**



### BEAVER G316 STAINLESS STEEL STANDARD BOW SHACKLES

Code	Grade	Shape	Closing Method	Dia Ø mm	A mm	B mm	C mm	Weight Kg	UOM	Pack Qty
615504	316	Bow	Screw	4	20	8	13	0.01	Each	1000
615505	316	Bow	Screw	5	23	10.8	17	0.02	Each	500
615506	316	Bow	Screw	6	31	13	21	0.03	Each	400
615508	316	Bow	Screw	8	36.5	17.5	28	0.06	Each	120
615510	316	Bow	Screw	10	44	21.5	35.5	0.11	Each	70
615512	316	Bow	Screw	12	52.5	27	41	0.22	Each	40
615516	316	Bow	Screw	16	73.5	32	54	0.49	Each	15

**NOT TO BE USED FOR LIFTING**



### BEAVER G316 STAINLESS STEEL LONG DEE SHACKLES

Code	Grade	Shape	Closing Method	Dia Ø mm	A mm	B mm	Weight Kg	UOM	Pack Qty
611404	316	Dee	Screw	4	31.3	7.5	0.01	Each	300
611406	316	Dee	Screw	6	45.3	13.5	0.03	Each	200
611408	316	Dee	Screw	8	60	16.5	0.07	Each	100
611410	316	Dee	Screw	10	75.5	20.8	0.16	Each	50
611412	316	Dee	Screw	12	90	25	0.27	Each	25

**NOT TO BE USED FOR LIFTING**

